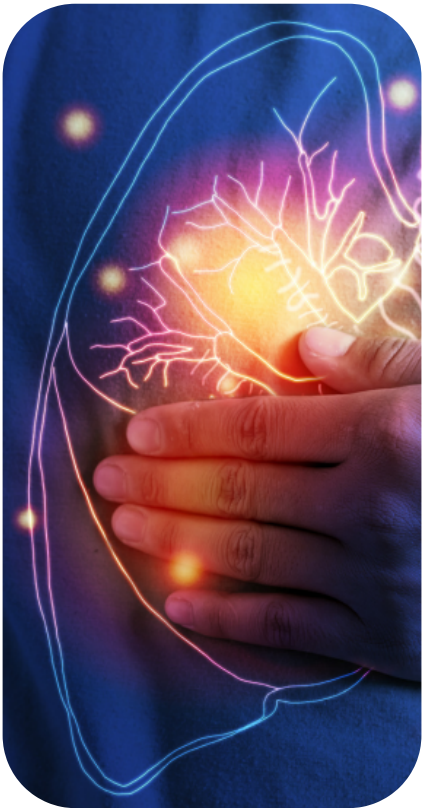


# AirQuarterly

The latest in air quality monitoring

Q2 2024



## The Health Impact of Particulate Pollution

Pollution, both natural and human-made, has a serious impact on human health and quality of life. Industrial processes, transportation, and agriculture emit various pollutants into the atmosphere including particulate matter, nitrogen oxides, sulfur dioxide, and volatile organic compounds. These pollutants degrade the quality of the air we breathe and increase the prevalence of respiratory disease, cardiovascular problems, and chronic illness.

AirSENCE, through its state-of-the-art technological innovations, is working across the globe to mitigate the harmful effects of particulate pollution in the air we breathe and safeguard the health and well-being of current and future generations.

[LEARN ABOUT OUR AIR QUALITY MONITORING TECHNOLOGY](#)



## AirSENCE Deployed in India to Monitor Impact of Construction Activities on Air Quality

In areas of rapid industrialization, large-scale construction, urbanization, and corresponding fossil-fuel-use contribute to significant levels of particulate pollution, including PM1, PM2.5, and PM10, increasing the risk of respiratory and other health issues to local populations.

That is why AirSENCE is proud to announce that this quarter, 100 units of AirSENCE DUST-WATCH, our ultra-low-cost particulate monitoring device, were installed in India to monitor the levels of PM1, PM2.5, and PM10 produced by construction activities in an effort to keep pollution to a minimum. More deployments are coming in Q3 and Q4, so stay tuned!

DUST-WATCH's low initial cost and ease of use make it an ideal particulate pollution monitoring solution.

[GET A QUOTE](#)



## AirSENCE to Release New, Advanced Version of DUST-WATCH

In keeping with our mission to provide accurate, accessible, and affordable air quality monitoring solutions, in the fall of 2024, AirSENCE is releasing an advanced version of DUST-WATCH, making monitoring the levels of particulate matter in the air you breathe easier than ever. Whether you are a construction company concerned about the particulate emissions of your operations, or a local resident concerned about the quality of the air in and around your home, DUST-WATCH will give you the insights you need to make informed decisions about your air quality.

For more information on DUST-WATCH

[VISIT OUR WEBSITE](#)



- Long Sensor Lifespan
- Precision Sensor Technology
- Zero Calibration
- Real-Time Alerts & Notifications
- Local Data Logging
- Real-time On-board Processing
- API & SDK for Platform Integration
- Add-on Weather Sensors




**2024 National Ambient Air Monitoring Conference**  
August 12-15, 2024



## Join AirSENCE at Upcoming Events!

National Ambient Air Monitoring Conference, New Orleans, LA (August 12-15, 2024), Booth 111

[EVENT INFO](#)



## AirSENCE is Growing!

We are now deployed in 21 countries across 5 continents.